



# CLYDE RAIL LINK

Connecting the new and fast growing suburbs of Melbourne's south east



The City of Casey is seeking a commitment to construct the much-needed duplicated rail extension from Cranbourne to Clyde.

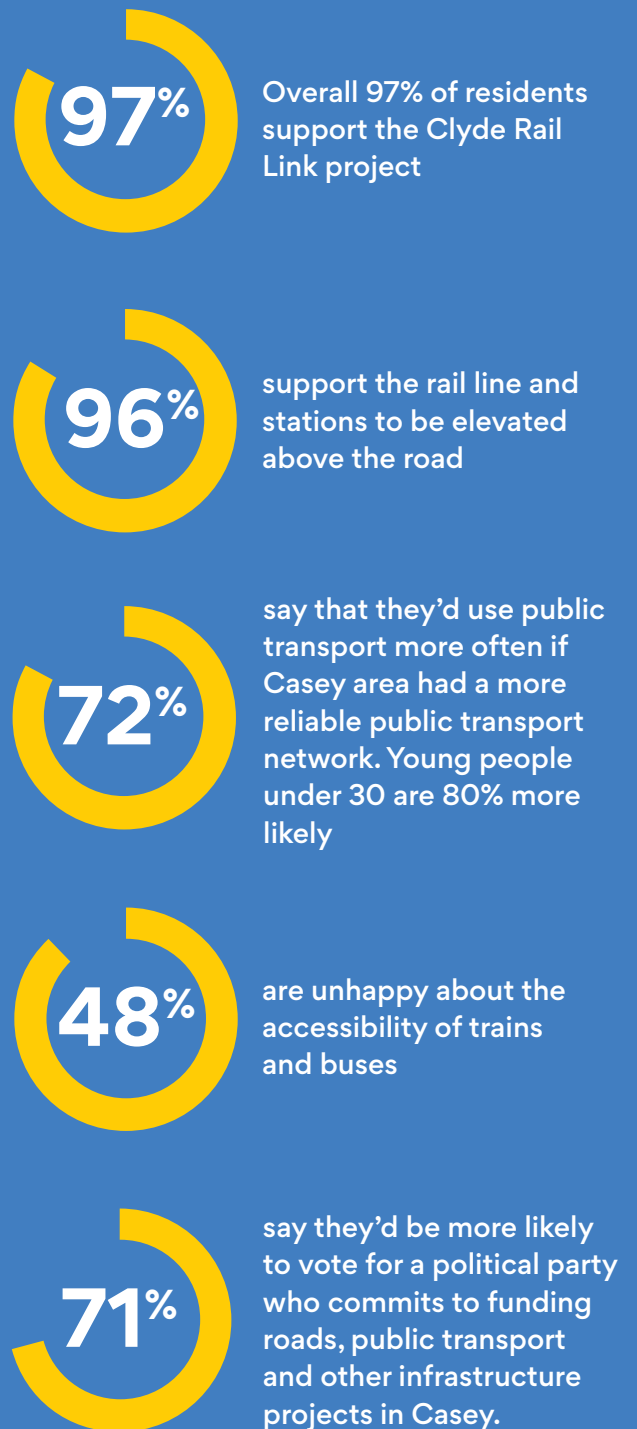
Once complete the Clyde Rail Link will connect the new and growing communities of Cranbourne East, Clyde and Clyde North to the services they need, with new stations at Cranbourne, Cranbourne East, Casey Fields and Clyde.



Closed rail line extension at Cranbourne – disused since mid 1990s.

## WHAT OUR COMMUNITY TOLD US

A recent city-wide community survey showed overwhelming support for Clyde Rail Link:



## Project Details

- Duplicated track for metropolitan network from Cranbourne to Clyde
- New stations at Cranbourne, Cranbourne East, Casey Fields and Clyde
- **Estimate cost \$1.5-\$3 Billion**

Project requires funding from both Victorian and Australian Governments.



Aerial view of the proposed Clyde Station site.

## GROWING TRANSPORT ISSUES

The City of Casey is one of Australia's largest and fastest growing areas. Home to 380,000 residents its growth is projected to reach 549,000 people by 2041 – equivalent to that of Canberra.

Transport infrastructure has not kept up with growth, leading to increased pressure on local roads and limited options for those without a car.

Sectors of this community record some of the highest levels of socio-disadvantage in Victoria. Lack of access to a metropolitan rail line further limits access to education and job precincts as well as to key services.

**Construction of Clyde Rail Link will provide hundreds of local jobs for a region hard hit by the pandemic and a legacy for Melbourne's south east.**

## CONNECTING CRANBOURNE AND CLYDE

Casey's community is calling for the construction of the much-needed Clyde Rail Link.

This project will connect fast growing communities in Melbourne's south east to essential services and jobs.

**Cranbourne East station** will serve the new Cranbourne Community Hospital which will provide hospital, community health and social care services from 2024.

**Casey Fields station** will be the gateway to the premier outdoor sport and recreation facility of the region – home to AFL/VFL and Melbourne City Football, cricket and more.

**Clyde station** will connect the booming Clyde and Clyde North communities (157,000+ by 2041) to the metropolitan train line and revitalise the Clyde township – creating jobs and investment.

## FOR MORE INFORMATION



Visit [www.casey.vic.gov.au/advocacy](http://www.casey.vic.gov.au/advocacy)



Follow the **Connecting Casey** Facebook page











TIS: 131450 المترجم الفوري 翻译 مترجم شفاهی ਦੁਬਾਸੀਆ භාෂණ පරිවර්තක

# Clyde Rail Link



## Legend

-  Existing rail line
-  New rail line
-  Upgrade train station and bus interchange
-  New train station
-  Grade separated crossing
-  Future Cranbourne Community Hospital
-  Future Clyde Town Centre
-  Casey Complex - Health and Education Precinct

